

# Clay Space—The Next Chapter

## July 2025 Newsletter #5



**Announcing: [Mariah Williams](#) is the Clay Space new Assistant Operations Manager!**

Mariah grew up in the small far west Texas town of Alpine and moved to Eugene in the Fall of 2015 to become the first Resident Artist at Clay Space. During her two years of residency at Clay Space she began teaching regularly and found joy in sharing this passion with others ever since. Mariah's background in ceramics consists of receiving a Bachelor's of Fine Arts in Studio Ceramics from the University of North Texas, apprenticing at the Whitefish Pottery studio in Montana and interning at the Clay Studio of Missoula. She returned to her hometown to receive a Masters of Arts in Art Education from Sul Ross State University. She was lead Ceramic Technician and Studio Coordinator at the University of Oregon's Craft Center from 2016-2023. She currently is the Gallery Display Chair for Clay Fest, the Programs Chair for Local Clay and the Chair of the Education Oversight Committee at Clay Space.



Her passion for clay truly began in college during her first ceramics course, and once she discovered the wheel, she spent many late nights in the studio over the next few years realizing it was the track she wanted to pursue. Her love of the medium comes from its malleable and impressionable qualities. The functional and utilitarian aspects of wheel thrown wares align with intentional purpose. Drawing from ancient eastern ideologies and motifs to create her LotusWare line. Focusing on refined form and minimalist design in her ModWare design, also referenced by her as Modern Utilitarian Designed work. When Mariah is not in a ceramic studio she is working as a Licensed Massage Therapist, practicing yoga or spending time outdoors.

Welcome, Mariah! Please introduce yourself if you have not met her yet. We are lucky to have her!

### Committee Updates

#### **Education Oversight—Mariah Williams**

- Jeff Keating is a new instructor, and we are working on adding a few more new instructors to our fall class offerings.
- Tabitha will be taking fall sabbatical so we have two classes to find new instructors.
- Mariah will be stepping back from teaching to focus on managing studio operations.

#### **Glaze Committee—Mariah Williams**

- This newly formed committee will work on glaze improvement and development.
- Members: Sienna Thomas, Deb Babcock, Lee Dwyer, Martha Pitts, and Jeff Keating.
- Our first meeting will be in mid-July. Keep an eye on your inbox for a glaze input survey.

## Clay Space—The Next Chapter—July 2025 Newsletter #5

### Board of Directors—Janiece Woodland

**Member Survey**—Our community here at Clay Space is very diverse. We would like to get to know our members a little better and one of the ways to do that is to better understand what you do (or did) outside of the studio. We will be fully transparent, we are looking for people who have skills or knowledge in certain areas that would like to potentially donate some time to our organization or at least be willing to talk to us to see if we can work out something if/when the time arises. Maybe it's not you directly, maybe it is a spouse, or another family member who might be interested in helping. Whatever the case, we would greatly appreciate everyone filling out the questionnaire found here [Link to CS Survey](#). This is NOT a commitment, it is only information gathering should a need arise. We would always prefer to utilize the skills in our community first before hiring an external resource.

### Raw Materials/Clay—Janiece Woodland

#### Clay Art Center Clays

- **OH10** - We have replaced BC10, due to poor performance, with this clay. This clay is a less expensive form of B-Mix and should be considered a great "general use" clay. We encourage you to give it a try. Like every new clay, it will take a bit of getting used to but we believe you will find it easy to work with and moderately forgiving.
- **MAC10** - A good quality porcelain, not quite as white as Babu or Crystal Springs, but for a lower price.
- **Dakota Yellow** - This clay has already become a studio favorite and there are several reasons why. It throws well, it can be used for hand-building, it fires a rich dark reddish-brown with a hint of umber. Iron speckles are present and visible with many of our glazes. It does not stain.

#### Laguna Clays

- **B-Mix**—Considered by many to be the industry standard for a white stoneware. Good for both hand-building and wheel. Slightly higher price than OH10.
- **B-Mix with Grog**—The same B-mix referenced above, with grog added. Great for throwing large or hand-building bigger pieces. The grog provides more structure.
- **Babu**—A wonderful, silky white porcelain. Recommended for those with at least an intermediate skill level.

### Volunteer Time Tracking—Muffie Fulton

- Don't forget to report your volunteer hours! All members need to report their hours using this [online form](#). As a reminder, you are expected to volunteer 2 hours each month as part of your membership agreement. Also report any other hours you spend volunteering on a committee or at a Clay Space event.
- Sign up for studio maintenance tasks using this [online spreadsheet](#). In late July an improved process will be implemented. Feel free to contact me ([muffie@gmail.com](mailto:muffie@gmail.com)) if you have any challenges or questions about the technology.

### Outreach and Workshops—Megan Anderson

We've had 2 fun and successful Sip and Sgraffi-to workshops at the May and June Last Friday Art Walks.

We are committed to continuing this workshop for the remaining 3 last Fridays this summer. Come join us for this beginner-friendly session and bring your friends and family. Introduce them to the fun and creative world of clay.

We will continue to pursue additional workshop opportunities in the community. If you have a group who may be interested in an event tailored for them, please reach out to: [office@clayspaceeugene.org](mailto:office@clayspaceeugene.org)

# Clay Space—The Next Chapter—July 2025 Newsletter #5

## Committee Updates

### **Events—Deb Babcock**

Here are a few of the upcoming events you will want to put on your calendar. **We are looking for and welcoming volunteers to help with these events.** If you are available and want to help while having a fun time, please contact Deb (deb@blueskypottery.com)

#### ***Whiteaker Last Friday Art Walk—July 25, August 29, and Sept 26. 5 PM-8 PM.***

Similar to Eugene's First Friday Art Walks, this is the Whiteaker neighborhood's event. We are one of about 20+ locations on the walk, open to the public. Invite friends and family and stop by to see new art in the gallery and enjoy some free food and wine/beverages. A Sip and Sgraffito Workshop will be held during each Art Walk—see the website to sign up. If you are interested in helping with set up/tear down, managing food, greeting visitors, or gallery sales, contact Deb.

#### ***Local Clay Picnic—August 24. 5PM-8 PM.***

This is an event we are hosting for the Local Clay organization. The studio will be open that day, but members/students will be asked to park in the lot across the street as we will be setting up tents in the Clay Space parking lot. We are going to need help with set up/tear down, assembling pizzas for the wood-fired oven, and organizing a pottery-making activity for that evening. If interested, contact Mariah (mariah@clayspaceeugene.org). If you are a member of Local Clay, you will receive an invitation from them. For more info about Local Clay, visit <https://www.clayfestonline.com/localclay>

#### ***Member Appreciation Party—September 12. 5PM-8 PM.***

Mark your calendar for a new event for all Clay Space members, students, teachers, staff, and their families. This will be a potluck with lots of activities similar to the Summer Shindig held in the past. Volunteers will be needed for set up/tear down and general assistance. We also need ideas for pottery challenge/competitions. If you can help with any of these, contact Tabitha (Tabitha@clayspaceeugene.org). Watch your email for the invitation and be sure to RSVP.

#### ***Holiday Sale—December 6 & 7 (tentative)***

Volunteers are needed to help organize our annual Holiday Sale. We need people to work on layout, decorating, check-out process, signage, marketing and more. If you want to help with this event, contact Deb (deb@blueskypottery.com)

#### ***Featured Artist—monthly***

One set of shelves in the hallway near the kilns is for a monthly featured artist. Artists are already scheduled for the rest of this year. Be sure to stop and view the changing display. Contact Emily or Deb if you are interested being featured in 2026.

#### ***Pottery Challenge—every two months***

These are themes to showcase your creativity. May/June was "Nesting". July/August will be "Magical". This is open to everyone, just place your themed piece on the shelf with a completed information slip (found on the shelves).

## Clay Space—The Next Chapter—July 2025 Newsletter #5



Laurie, Martha, & Cecilia



Raku Vases



Amiya

The first annual Second Avenue Art Fest on June 8 was an amazing success. Despite the unusually hot weather, for early June, everyone agreed that the event was lots of fun for both vendors and visitors. The kid's clay area, demos, music, and food truck were a big hit with all attendees. Clay Space artists earned over \$1200 for the studio. Partnering with Wildling Collaborative Arts and Whiteaker Printmakers made it a special neighborhood event. Hopefully this will become a yearly event and maybe even expand to invite more 2nd Ave artists to join us.



Deb



Future Potters



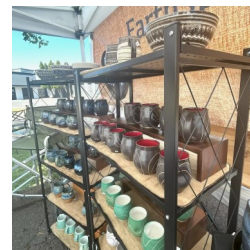
Emily, Kat, Deb, Janiece,  
Matty, & Barbara

### Current Board Members

Denise Railsback
Janiece Woodland
Sherri Jackson
Tabitha Buzby
Meg Littler
Gabby Thompson



Lidded Jars



Pottery Display

## Ways to Donate to Clay Space

### MONETARY DONATIONS

On the new website there is now a place where you can choose to make a monetary donation to Clay Space. It can be found on the Nonprofit Roadmap page. Click on [this link](#) to take you there. As always, check with your financial advisor for claiming donations on your tax return.

### WISH LIST

Do you have any of these items that you aren't using anymore? Donate them to Clay Space and help make life a little easier for the office staff.

- Heavy paper cutter
- Scanner/copier/printer
- Shredder
- Laminator